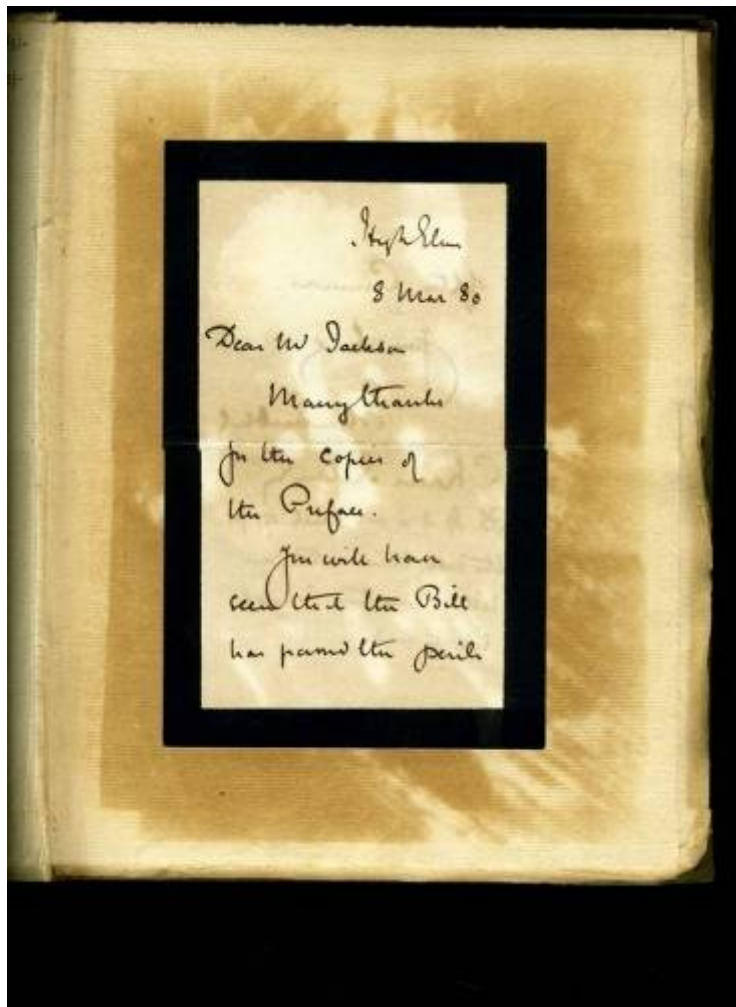




Introduction



2 *Our Ancient Monuments*

THE ROLLRIGHT STONES, *Little Rollright, Oxfordshire.*

THE ANCIENT STONES at Stanton Drew, *Stanton Drew, Somersetshire.*

THE CHAMBERED TOMBULS at SUNEY LITTLETON, *Wellow, Wellow, Somersetshire.*

CADSBURY CASTLE, *South Cadbury, Somersetshire.*

CESAR'S CAMP, *Wotton, Surrey.*

MAYBOROUGH, near *Penrith, Barton, Westmorland.*

ARTHUR'S ROUND TABLE, *Penrith, Barton, Westmorland.*

THE GROUP OF STONES known as STONEHENGE, *Amesbury, Wiltshire.*

OLD SARUM, *Wiltshire.*

THE VALLUM at ABERY, the SARCEY STONES within the same, those along the *Stannard Road*, and the group between *Abery and Beckhampston, Abery, Wiltshire.*

THE LONG BARROW at *West Kennet, near Marlborough, West Kennet, Wiltshire.*

SILSBURY HILL, *Abery, Wiltshire.*

THE DOLMEN (DEVIL'S DEN), near *Marlborough, Fyfield, Wiltshire.*

BARBUKY CASTLE, *Oxbovies, St. Andrews, and Swinden, Wiltshire.*

SCOTLAND.

THE BARS OF INVERURY, *Inverurie, Aberdeenshire.*

THE VYRIFIED FORT on the Hill of *North, Nisquis, Aberdeenshire.*

THE PILLAR AND STONE at *Newton-in-the-Garioch, Cullinstown, Aberdeenshire.*

THE CIRCULAR WALLED STRUCTURES called EDIN'S HALL, on *Cockburn Law, Dairs, Berwickshire.*

THE BRITISH WALLED SETTLEMENT enclosing Hous at *Harefields in Lauderdale, Leuder, Aberdeenshire.*

THE DUN OF DORNADILLA, *Durness, Sutherlandshire.*

THE SCULPTURED STONE called SUBMOSS STONE, near *Forbes, Rafford, Elgin.*

THE CROSS SLAB, with INSCRIPTION, in the Churchyard of *St. Vigean, St. Vigean, Forfarshire.*

THE BRITISH FORTS, on the Hills, called THE BLACK AND WHITE CATHEDRONS, *Monzie, Forfarshire.*

A GROUP OF REMAINS and PILLARS on a HUGH at *Clava, on the banks of the Nair, Cray and Dalriada, Inverness.*

THE PICTISH TOWERS at *Glencly, Glencly, Inverness.*

THE CAIRNS, with CHAMBERS and GALLERIES, partially dissipated, *Minigaff, Kirkcubrightshire.*

THE CATSTANE, an inscribed pillar, *Kirkhill, Linlithgow.*

THE RING OF BRUGGAR and other STONE PILLARS, at *Stennis, in Orkney*, and the neighbouring PILLARS, *Firth and Stennis, Orkney.*

THE CHAMBERED MOUND OF MAESHOWE, *Firth and Stennis, Orkney.*

THE STONES OF CALLENISH, *Uig, Ross.*

THE BURGH OF CLICKRANTY, *Scowal, Shetland.*

THE PICTISH TOWER at *Mouss, in Shetland, Dunrossness, Shetland.*

THE INSCRIBED SLAB standing on the roadside leading from *Wigton to Whithorn* and about a mile from *Whithorn, Wiltshire, Wigtonshire.*

TWO STONES, with INCISED CROSSES, on a mound in a field at *Laggansier, New Luce, Wigtonshire.*

THE PILLARS at *Kirkmadrine, Strathairn, Wigtonshire.*

IRELAND.

THE EARLIEST ENCLOSURE and MOUNDS called the *NAYAN FORT, Eglisk, Armagh.*

ALONG MOUNDS and GROUPS of SEPULCHRAL CELLS in *Glen Maulin, Glencolumbkille, Donegal.*



Ancient monuments



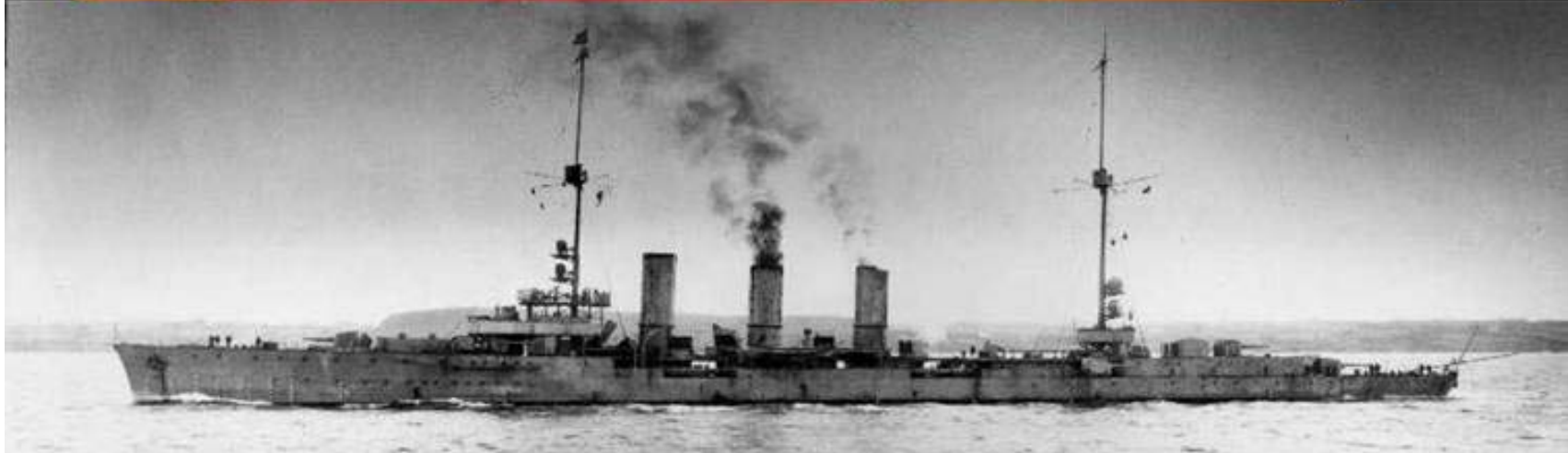
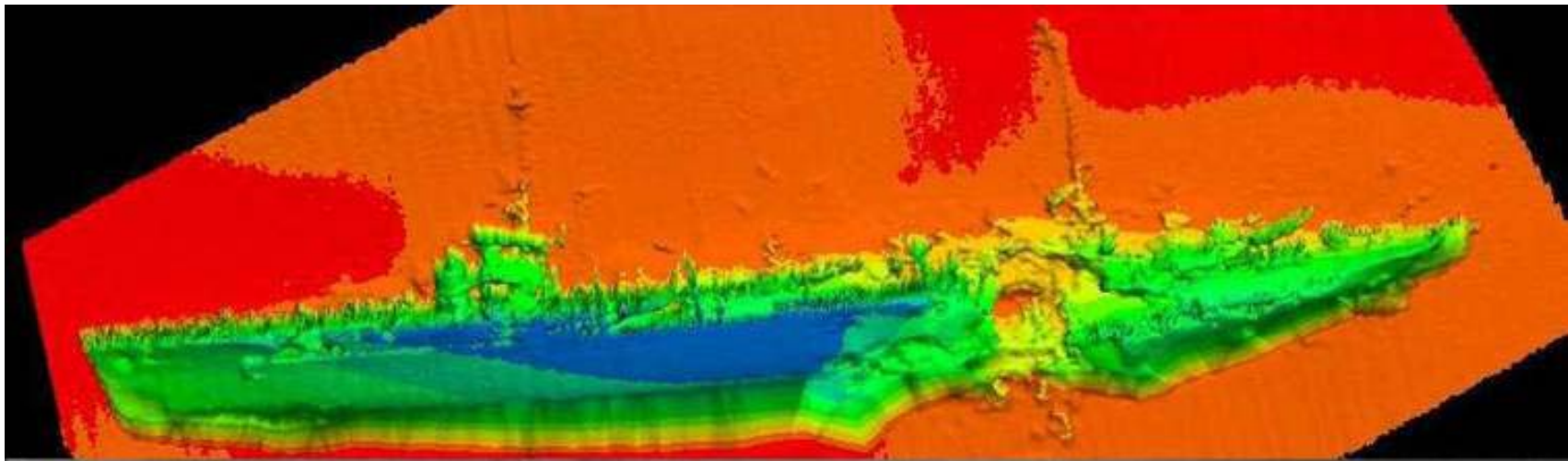
Conservation areas



Historic gardens



Historic wrecks



World heritage sites



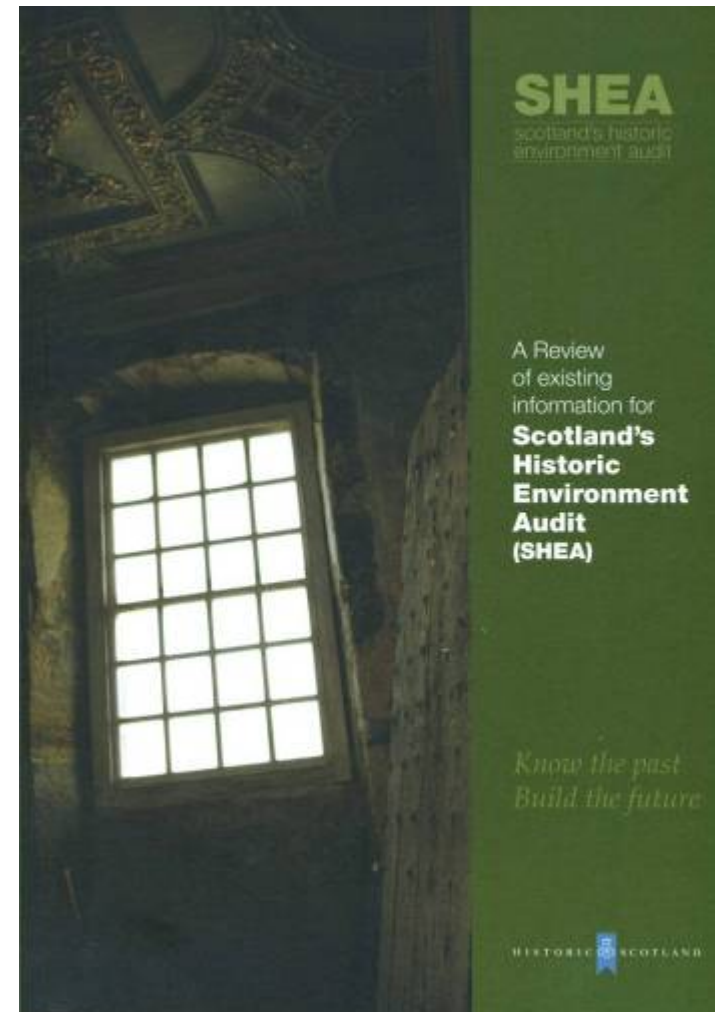
Battlefields





Scotland's Historic Environment

- 47,399 listed building entries
- 8,099 ancient monuments
- 637 conservation areas
- c.386 gardens and landscapes
- 5 world heritage sites
- 8 designated wreck sites
- Historic environment records





Potential

- Identity
- History & education
- Tourism & leisure
- Sustainability
- Local distinctiveness
- Placemaking & cohesion
- Health & quality of life
- Employment and economy



Education



Tourism





Sustainability



Managing
Change
in the Historic
Environment



Micro-Renewables



Consultation draft
April 2009

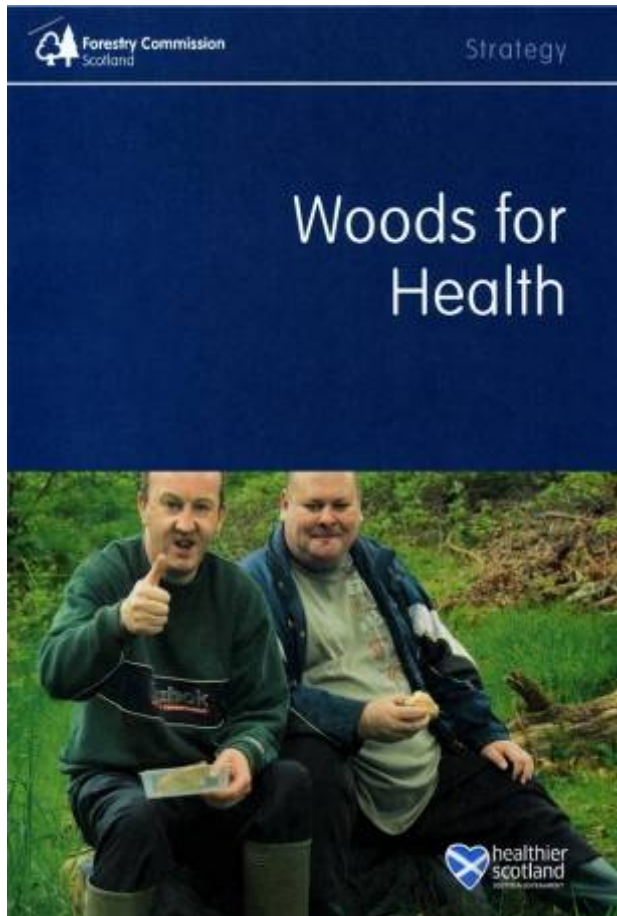
Placemaking and distinctiveness



Employment and Volunteering



Health



How to release further potential:





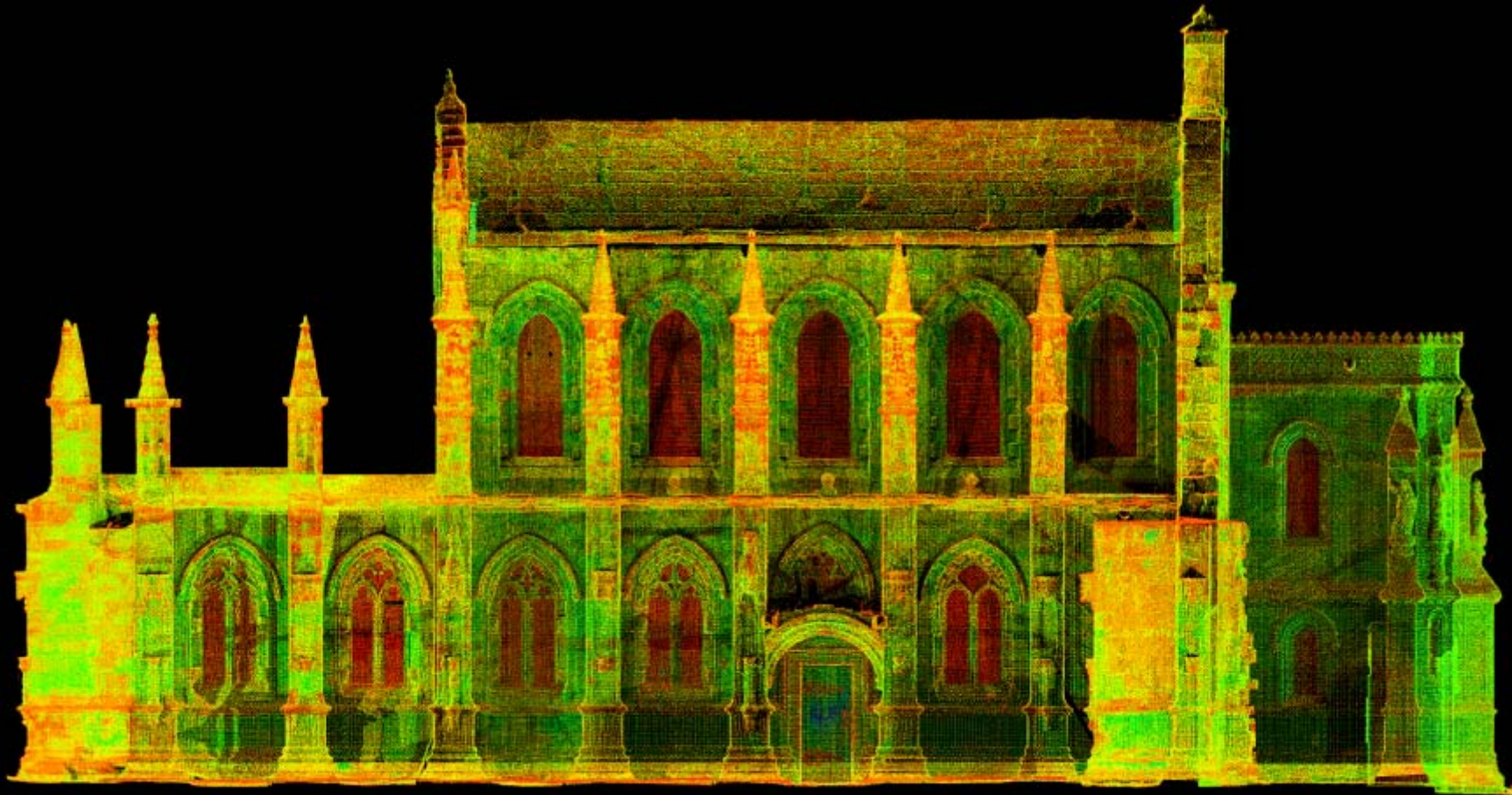
Implications

- More and a broader range
- Significant number privately owned and managed
- More people involved
- The majority not museums/sites
- Better understanding
- Changes in roles and approach





Discovering and understanding



Explaining and sharing





Main Menu

- Search... ▶
- Help ?
- Audio ✓
- Virtual Tour 3D
- Home 🏠
- Roof
- Doors and Windows
- Walls
- Metalwork
- Interiors
- Miscellaneous
- Energy Efficiency

- Pantiles
- Scottish Slate Roofs
- Cast Iron Rainwater Goods
- Roofing Leadwork
- Finials and Terminals
- Corrugated Iron
- Domestic Chimneys and Flues

Show me
Tell me

The INFORM House

Information for historic building owners

CLICK
HERE

FREE! Try the interactive INFORM House today!

FREE CD-Rom available soon from www.historic-scotland.gov.uk

To Exit, press 'Esc'



Investing



Partnering





Enabling

14 FEBRUARY 2015

CASTLE CONSERVATION REGISTER

The Castle Conservation Register identifies special castles and tower houses that are believed to be nationally important and are listed in the Register. The Register is a list of castles and tower houses that are nationally important and are listed in the Register. The Register is a list of castles and tower houses that are nationally important and are listed in the Register.

What is the Castle Conservation Register?

The Register is a list of castles and tower houses that are nationally important and are listed in the Register. The Register is a list of castles and tower houses that are nationally important and are listed in the Register.

What is the Register for?

The Register is a list of castles and tower houses that are nationally important and are listed in the Register. The Register is a list of castles and tower houses that are nationally important and are listed in the Register.

How do I get on the Register?

The Register is a list of castles and tower houses that are nationally important and are listed in the Register. The Register is a list of castles and tower houses that are nationally important and are listed in the Register.

What is the Register for?

The Register is a list of castles and tower houses that are nationally important and are listed in the Register. The Register is a list of castles and tower houses that are nationally important and are listed in the Register.



Some dimensions for adding Value

- Discovering and understanding
- Explaining and sharing
- Involving
- Empowering
- Investing
- Partnering
- Enabling

HISTORIC SCOTLAND



Malcolm Cooper
Chief Inspector, Historic Scotland

Contact:

malcolm.cooper@scotland.gsi.gov.uk

Or 0131 668 8728

www.historic-scotland.gov.uk